

# IX EULAR Scientifically Endorsed Course on Systemic Lupus Erythematosus

Pisa, Italy  
May 12<sup>th</sup> - 17<sup>th</sup>, 2019



*Course Chairpersons*  
Stefano Bombardieri, Marta Mosca

**eular**

Scientific Secretariat:  
Chiara Tani

Organizing Secretariat:  
Luisa Marconcini, Elisa Baldacci



*c/o Clinical and Experimental Rheumatology*  
Via Santa Maria 31, I-56126 Pisa, Italy.  
Tel.: +39-050-40124; Fax: +39-050-502299  
e-mail: [meetings@clinexprheumatol.org](mailto:meetings@clinexprheumatol.org)

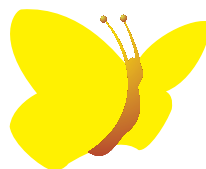


Provider ECM n. 1709  
Clinical and Experimental Rheumatology  
Via Santa Maria 31 – 56126 Pisa, Italy  
Tel.: +39 050 40124  
Fax: +39 050 502299  
<http://ecm.clinexprheumatol.org>  
[meetings@clinexprheumatol.org](mailto:meetings@clinexprheumatol.org)



The IX EULAR Scientifically Endorsed Course on Systemic Lupus Erythematosus is accredited by the Italian Ministry of Health, and has been granted **24** E.C.M. credits.

These credits may be claimed by medical doctors of the following specialties: immunology and allergology, internal medicine, rheumatology.



**Pisa, Italy, May 12<sup>th</sup> - 17<sup>th</sup>, 2019**

*Organized in collaboration with EULAR  
Standing Committee on Education and Training*

## Faculty

*Course Chairmen:*

Stefano Bombardieri (*Italy*)

Marta Mosca (*Italy*)

T. Alexander (*Germany*)

J. Andersen (*Denmark*)

L. Andreoli (*Italy*)

M. Aringer (*Germany*)

L. Arnaud (*France*)

G. Bertsias (*Greece*)

A. Bortoluzzi (*Italy*)

I.N. Bruce (*UK*)

A. Canzona (*Italy*)

R. Cervera (*Spain*)

F. Conti (*Italy*)

A. Cornet (*Belgium*)

N. Costedoat-Chalumeau (*France*)

M. Cutolo (*Italy*)

A. Doria (*Italy*)

E. Elefante (*Italy*)

A. Fanouriakis (*Greece*)

R. Fischer-Betz (*Germany*)

A. Goules (*Greece*)

M. Govoni (*Italy*)

F. Houssiau (*Belgium*)

A. Kuhn (*Germany*)

P.L. Meroni (*Italy*)

P. Migliorini (*Italy*)

G. Moroni (*Italy*)

G. Orsolini (*Italy*)

M. Östensen (*Norway*)

M. Pickering (*UK*)

G. Ruiz-Irastorza (*Spain*)

M. Schneider (*Germany*)

Y. Shoenfeld (*Israel*)

V. Smith (*Belgium*)

F. Strigini (*Italy*)

C. Tani (*Italy*)

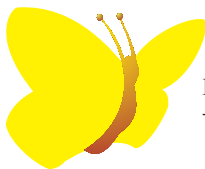
M. Tektonidou (*Greece*)

A. Tincani (*Italy*)

R. Voll (*Germany*)

A.E. Voskuyl (*the Netherlands*)

V. Werth (*USA*)



## Sunday, May 12<sup>th</sup>

14.00 – 16.00		Arrival and registration of participants
16.00 – 16.30	<i>S. Bombardieri</i>	Course presentation
16.30 – 17.00	<i>M. Mosca</i>	ERN: a new frontier for rare and complex diseases
<i>Patients perspective</i>		
17.00 – 17.30	<i>A. Canzona</i>	Welcome address from the patients organization
17.30 – 18.00	<i>J. Andersen</i>	A difficult journey: living with lupus
18.00 – 18.30	<i>A. Cornet</i>	Key learning from Lupus Europe Patient panels
18.00 – 18.30	<i>M. Cutolo</i>	Diet and rheumatic diseases: the importance of the Mediterranean diet
<b>19.00</b>	<b>Welcome reception and dinner</b>	

## Monday, May 13<sup>th</sup>

### **Morning**

#### *Pathogenesis and therapeutic targets of SLE*

*Moderators: R. Voll, P. Migliorini*

09.00 – 10.00	<i>A. Doria</i>	Pathogenesis and new therapies in SLE
10.00 – 10.30	<i>M. Pickering</i>	The role of complement in the pathogenesis of SLE
10.30 – 11.00	<i>R. Voll</i>	B cells in SLE

### **11.00-11.30 Coffee Break**

11.30 – 12.00	<i>P. Migliorini</i>	Pathogenetic antibodies in SLE
12.00 – 12.30	<i>I.N. Bruce</i>	Disease activity indices in SLE: use in clinical trials and clinical practice
12.30 – 13.00	<i>F. Houssiau</i>	Therapeutic algorithms in lupus nephritis

### **Afternoon**

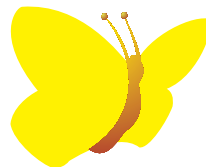
#### *Kidney involvement*

*Moderator: M. Mosca*

15.00 – 15.30	<i>M. Tektonidou</i>	Epidemiology and outcomes in lupus nephritis
15.30 – 16.00	<i>G. Moroni</i>	Clinical features and biomarkers in lupus nephritis

### **16.00 – 16.15 Coffee Break**

16.15 – 17.15	Presentation and discussion of clinical cases	
---------------	---	--



**Tuesday, May 14<sup>th</sup>**

**Morning**

*Highlights on SLE treatment*

*Moderator: M. Schneider*

09.00 – 09.30	<i>G. Ruiz-Irastorza</i>	New perspectives for old drugs: corticosteroids
09.30 – 10.00	<i>N. Costedoat-Chalumeau</i>	New perspectives for old drugs: antimalarials
10.00 – 10.30	<i>C. Tani</i>	New perspectives for old drugs: immunosuppressive drugs
<b>10.30– 11.00</b>	<b>Coffee break</b>	
11.00 – 11.30	<i>T. Alexander</i>	Resetting the immune system with immunoablation and autologous haematopoietic stem cell transplantation in autoimmune diseases
11.30 – 12.00	<i>L. Arnaud</i>	Drug-induced SLE
12.00 – 12.30	<i>A.E. Voskuyl</i>	Treat-to-target in SLE: yes or no?
12.30 – 13.00	<i>M. Schneider</i>	Patient-reported outcomes and communication gaps in SLE

**Afternoon**

*Skin involvement*

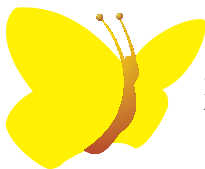
*Moderator: C. Tani*

15.00 – 15.30	<i>A. Kuhn</i>	Overview of cutaneous manifestations in SLE
15.30 – 16.00	<i>V. Werth</i>	Treatment of cutaneous manifestations in SLE
16.00 – 16.30	<i>V. Smith</i>	Microcirculation in SLE

**16.30 – 16.45 Coffee break**

**Case Study Workshop**

16.45 – 17.15	<i>E. Elefante</i>	Management of cutaneous manifestations in clinical practice
17.15 – 18.15	Presentation and discussion of clinical cases	



*Wednesday, May 15<sup>th</sup>*

**Morning**

*Moderators: A. Tincani, M. Östensen*

09.00 – 09.30      *Y. Shoenfeld*      The environment and autoimmunity

*Pregnancy and SLE*

09.30 – 10.00      *A. Tincani*      Contraception, prevention of infertility  
and hormonal therapy in SLE

10.00 – 10.30      *M. Östensen*      Drug therapy and toxicity in  
pregnancy and lactation

**10.30 – 11.00      *Coffee break***

11.00 – 11.30      *R. Fischer-Betz*      Outcome of pregnancy in patients  
with SLE and APS

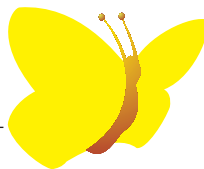
11.30 – 12.00      *F. Strigini*      Pregnancy and rheumatic diseases:  
the obstetrician point of view

**Case Study Workshop**

12.00 – 12.30      *L. Andreoli*      Management of contraception and  
pregnancy in clinical practice

12.30 – 13.00      Presentation and discussion of clinical cases

**Afternoon: FREE**



**Thursday, May 16<sup>th</sup>**

**Morning**

*Assessment of SLE in clinical trials and routine clinical practice*

*Moderator: R. Cervera*

09.00 – 09.30	<i>M. Aringer</i>	The new SLE classification criteria
09.30 – 10.00	<i>M. Mosca</i>	Low disease activity and remission in SLE: where are we?
10.00 – 10.30	<i>A. Fanouriakis</i>	EULAR recommendations for SLE management: an update
<b>10.30 – 11.00</b>	<b>Coffee break</b>	
11.00 – 11.30	<i>R. Cervera</i>	SLE and antiphospholipid syndrome

**Clinical exercise**

11.30 – 12.00	The application of the EULAR/ACR 2019 SLE classification criteria in clinical practice
12.00 – 13.00	Presentation and discussion of clinical cases

**Afternoon**

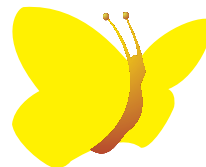
*CNS involvement*

*Moderator: M. Govoni*

15.00 – 15.30	<i>P.L. Meroni</i>	Pathogenesis of CNS involvement in SLE
15.30 – 16.00	<i>M. Govoni</i>	The picture of neuropsychiatric lupus
16.00 – 16.30	<i>G. Bertias</i>	Treatment of NPSLE
<b>16.30 – 16.45</b>	<b>Coffee break</b>	

**Case Study Workshop**

16.45 – 17.15	<i>A. Bortoluzzi</i>	Differential diagnosis and management of neuropsychiatric lupus: from EULAR recommendations to real life
17.15 – 17.45	Presentation and discussion of clinical cases	



*Friday, May 17<sup>th</sup>*

***Morning***

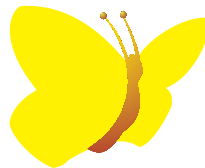
*SLE and other conditions*

*Moderator: S. Bombardieri*

09.00 – 09.30	<i>F. Conti</i>	Comorbidities and damage in SLE
09.30 – 10.00	<i>A. Goules</i>	SLE and Sjögren's syndrome
10.00 – 10.30	<i>C. Tani</i>	SLE and rheumatoid arthritis
10.30 – 11.00	<i>G. Orsolini</i>	Osteoporosis: management in patients with SLE
11.00 – 11.30	<i>S. Bombardieri</i>	Closing remarks and course conclusion
11.30 – 12.00	Completion of CME tests and departure of participants	

**Pisa, Italy, May 12<sup>th</sup> - 17<sup>th</sup>, 2019**

---



## **General Information**

### **Venue:**

Grand Hotel Duomo  
via Santa Maria 94, I-56126 Pisa, Italy

### **Course Chairpersons:**

Stefano Bombardieri  
Marta Mosca

### **Scientific Secretariat:**

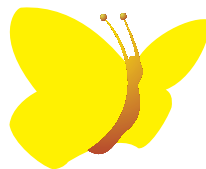
Chiara Tani  
c/o Clinical Experimental Rheumatology, Via Santa Maria 31, I-56126 Pisa, Italy.  
Phone (+39) 050 40124 - Fax (+39) 050 502299  
E-mail: [meetings@clinexprheumatol.org](mailto:meetings@clinexprheumatol.org)

### **Organizing Secretariat:**

Luisa Marconcini, Elisa Baldacci  
Clinical and Experimental Rheumatology, Via Santa Maria 31, I-56126 Pisa, Italy.  
Phone: (+39) 050 40124; Fax: (+39) 050-502299  
e-mail: [meetings@clinexprheumatol.org](mailto:meetings@clinexprheumatol.org)

**Pisa, Italy, May 12<sup>th</sup> - 17<sup>th</sup>, 2019**

---



## **General Information**

### **Registration and accommodation fees**

In order to attend the Course, participants are requested to complete the Registration Form and return it, with the payment to the Organizing Secretariat.

Fees per person, including full board (3 stars facilities) and all educational materials, are: € 1,100.00 + VAT (double room); € 1,250.00 + VAT (single room).

All prices cover full board and accommodation for the duration of the course (5 nights).

Personal extras are not included.

### **Scholarships**

Scholarships to attend the Course, covering registration, accommodation and full board, have been offered by *EULAR*, the *Italian Society of Rheumatology (SIR)* and *"Gruppo LES Italiano" (Italian Lupus Patients Association)*. Preference has been given to European and Italian young rheumatologists (age below 40) or rheumatology trainees, coming from countries with relevant educational and financial needs. No more than one scholarship per centre has been awarded.

### **Certificate of Attendance**

A certificate of attendance to the Course will be given by the Secretariat.

*The “IX EULAR Scientifically Endorsed Course on  
Systemic Lupus Erythematosus”*

*was made possible thanks to the generous unrestricted support of:*

eular

- *European League Against Rheumatism (EULAR)*



- *Società Italiana di Reumatologia (S.I.R.)*



- *Italian Lupus Patients Association “Gruppo Italiano LES”*

*and*



- *GlaxoSmithKline S.p.A.*

*Scientific endorsement was also provided by*



- *Università di Pisa*



- *Azienda Ospedaliero-Universitaria Pisana (AOUP)*



- *European Reference Network on Connective Tissue and Musculoskeletal Diseases (ERN ReCONNET)*



***Course Chairpersons***

Stefano Bombardieri, Marta Mosca

***Scientific Secretariat***

Chiara Tani

*c/o Clinical and Experimental Rheumatology*

Via Santa Maria 31, I-56126 Pisa, Italy. Phone: (+39) 050 40124; Fax: (+39) 050 502299

E-mail: [meetings@clinexprheumatol.org](mailto:meetings@clinexprheumatol.org)

***Organizing Secretariat***

Luisa Marconcini, Elisa Baldacci

*Clinical and Experimental Rheumatology*

Via Santa Maria 31, I-56126 Pisa, Italy. Phone: (+39) 050 40124; Fax: (+39) 050 502299

E-mail: [meetings@clinexprheumatol.org](mailto:meetings@clinexprheumatol.org)

website: <http://ecm.clinexprheumatol.org>