

# VIII EULAR Scientifically Endorsed Course on Systemic Lupus Erythematosus

Pisa, Italy

May 21<sup>st</sup> - 26<sup>th</sup>, 2017



*Course Chairpersons*  
Stefano Bombardieri, Marta Mosca

**eular**

Scientific Secretariat:  
Chiara Tani

Organizing Secretariat:  
Luisa Marconcini, Elisa Baldacci



*c/o Clinical and Experimental Rheumatology*  
Via Santa Maria 31, I-56126 Pisa, Italy.  
Tel.: +39-050-40124; Fax: +39-050-502299  
e-mail: [meetings@clinexprheumatol.org](mailto:meetings@clinexprheumatol.org)



Provider ECM n. 1709  
Clinical and Experimental Rheumatology  
Via Santa Maria 31 – 56126 Pisa, Italy  
Tel.: +39 050 40124  
Fax: +39 050 502299  
<http://ecm.clinexprheumatol.org>  
[meetings@clinexprheumatol.org](mailto:meetings@clinexprheumatol.org)



The VIII EULAR Scientifically Endorsed Course on Systemic Lupus Erythematosus is accredited by the Italian Ministry of Health, and has been granted **26 E.C.M.** credits.

These credits may be claimed by medical doctors of the following specialties: immunology and allergology, internal medicine, rheumatology.



The ‘VIII EULAR Scientifically Endorsed Course on Systemic Lupus Erythematosus’ was granted **24** European CME credits (ECMEC) by the European Accreditation Council for Continuing Medical Education (EACCME).

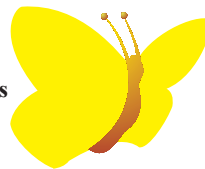
The ‘VIII EULAR Scientifically Endorsed Course on Systemic Lupus Erythematosus’ is accredited by the European Accreditation Council for Continuing Medical Education (EACCME) to provide the following CME activity for medical specialists.

The EACCME is an institution of the European Union of Medical Specialists (UEMS), [www.uems.net](http://www.uems.net).

The ‘VIII EULAR Scientifically Endorsed Course on Systemic Lupus Erythematosus’ is designated for up to 24 hours of European external CME credits. Each medical specialist should claim only those hours of credit that he/she actually spent in the educational activity.

Through an agreement between the European Union of Medical Specialists and the American Medical Association, physicians may convert EACCME credits to an equivalent number of AMA PRA category 1 Credits™. Information on the process to convert EACCME credit to AMA credit can be found at [www.ama-assn.org/go/internationalcme](http://www.ama-assn.org/go/internationalcme).

Live educational activities, occurring outside of Canada, recognized by the UEMS-EACCME for ECMEC credits are deemed to be Accredited Group Learning Activities (Section 1) as defined by the Maintenance of Certification Program of The Royal College of Physicians and Surgeons of Canada.



**Pisa, Italy, May 21<sup>st</sup> - 26<sup>th</sup>, 2017**

*Organized in collaboration with EULAR  
Standing Committee on Education and Training*

## Faculty

### *Course Chairmen:*

Stefano Bombardieri (*Italy*)

Marta Mosca (*Italy*)

M. Alarcon-Riquelme (*Spain*)

L. Andreoli (*Italy*)

M. Aringer (*Germany*)

S. Badreh (*Sweden*)

C. Baldini (*Italy*)

G. Bertsias (*Greece*)

D.T. Boumpas (*Greece*)

I.N. Bruce (*UK*)

R. Cervera (*Spain*)

N. Costedoat-Chalumeau (*France*)

M. Cutolo (*Italy*)

M. Caproni (*Italy*)

A. Doria (*Italy*)

R. Fischer-Betz (*Germany*)

M. Galeazzi (*Italy*)

M. Govoni (*Italy*)

F. Houssiau (*Belgium*)

T.W.J. Huizinga (*the Netherlands*)

A. Kuhn (*Germany*)

P.L. Meroni (*Italy*)

P. Migliorini (*Italy*)

G. Moroni (*Italy*)

M. Östensen (*Norway*)

J.M. Pego-Reigosa (*Spain*)

A. Rossi (*Italy*)

G. Ruiz-Irastorza (*Spain*)

M. Schneider (*Germany*)

Y. Shoenfeld (*Israel*)

F. Strigini (*Italy*)

C. Tani (*Italy*)

A. Tincani (*Italy*)

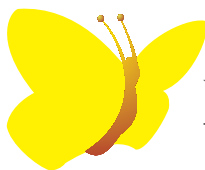
A.G. Tzioufas (*Greece*)

R. Vagelli (*Italy*)

A. Verdelli (*Italy*)

R. Voll (*Germany*)

A.E. Voskuyl (*the Netherlands*)



## VIII EULAR Scientifically Endorsed Course on Systemic Lupus Erythematosus

---

### Sunday, May 21<sup>st</sup>

14.00 – 16.00		Arrival and registration of participants
16.00 – 16.15	<i>M. Galeazzi</i>	Welcome address from the President of the <i>Italian Society of Rheumatology</i>
16.15 – 16.30	<i>S. Bombardieri</i>	Historical overview of the SLE Course
16.30 – 16.45	<i>M. Mosca</i>	Course presentation
<b>16.45 - 17.15</b>	<b>Coffee Break</b>	
<i>Moderators: M. Galeazzi, S. Bombardieri</i>		
17.15 – 17.45	<i>S. Bombardieri</i>	The clinical spectrum of SLE: from UCTD to complex syndromes
17.45 – 18.15	<i>S. Badreh</i>	A difficult journey: living with lupus
18.15 – 18.45	<i>A. Rossi</i>	Diet and SLE: the importance of the Mediterranean diet

**19.00**                      **Welcome reception and dinner**

### Monday, May 22<sup>nd</sup>

#### **Morning**

#### *Pathogenesis of SLE*

*Moderators: R. Voll, P. Migliorini*

09.00 – 09.30	<i>A. Doria</i>	Pathogenesis and therapeutic targets
09.30 – 10.00	<i>M. Alarcon-Riquelme</i>	Genetics in SLE and autoimmune diseases
10.00 – 10.30	<i>P. Migliorini</i>	Pathogenetic antibodies in SLE

**10.30-11.00**                      **Coffee Break**

11.00 – 11.30	<i>M. Cutolo</i>	Hormone D and SLE
11.30 – 12.00	<i>R. Voll</i>	B cells in SLE

#### **Afternoon**

#### *Skin involvement*

*Moderator: M. Mosca*

15.00 – 15.30	<i>M. Caproni</i>	Overview of cutaneous manifestations in SLE
15.30 – 16.00	<i>A. Kuhn</i>	Treatment of cutaneous manifestations in SLE

**16.00 – 16.15**                      **Coffee Break**

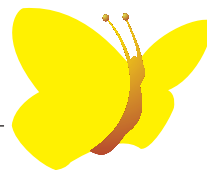
**16.15 – 17.15**                      **Case Study Workshop**

*Moderator: A. Kuhn*

*Discussant: A. Verdelli*

Management of cutaneous manifestations in clinical practice





**Pisa, Italy, May 21<sup>st</sup> - 26<sup>th</sup>, 2017**

---

***Tuesday, May 23<sup>rd</sup>***

***Morning***

*Highlights of SLE treatment*

*Moderators: N. Costedoat-Chalumeau, M. Schneider*

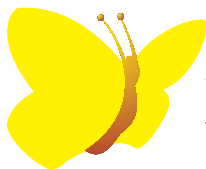
09.00 – 09.30	<i>G. Ruiz-Irastorza</i>	Corticosteroid: principles of therapy and monitoring
09.30 – 10.00	<i>N. Costedoat-Chalumeau</i>	Antimalarials and adherence to therapy in SLE
10.00 – 10.30	<i>G. Bertias</i>	”Traditional drugs” in SLE. Focus on immunosuppressive drugs
<b>10.30– 11.00</b>	<b><i>Coffee break</i></b>	
11.00 – 11.30	<i>M. Schneider</i>	New therapies in SLE
11.30 – 12.00	<i>A.E. Voskuyl</i>	Treat-to-target in SLE: yes or no?
12.00 – 13.00	<b>Case Study Workshop</b>	
	<i>Moderator: G. Ruiz-Irastorza</i>	
	<i>Discussant: C. Tani</i>	Real life experience on the use of new biological drugs in clinical practice

***Afternoon***

*Kidney involvement*

*Moderators: F. Houssiau, G. Moroni*

15.00 – 15.30	<i>J.M. Pego-Reigosa</i>	Epidemiology and outcomes in lupus nephritis. Literature data and the experience of the RELESSER study group
15.30 – 16.00	<i>G. Moroni</i>	Clinical features and biomarkers in lupus nephritis
16.00 – 16.30	<i>F. Houssiau</i>	Therapeutic algorithms in lupus nephritis
<b>16.30– 16.45</b>	<b><i>Coffee break</i></b>	
16.45 – 18.00	<b>Discussion of difficult clinical cases on kidney involvement</b>	



*Wednesday, May 24<sup>th</sup>*

**Morning**

*Pregnancy and SLE*

*Moderators: A. Tincani, M. Östensen*

08.30 – 09.00	<i>Y. Shoenfeld</i>	Autoimmunity: after all everything is microbiome, until proven otherwise
09.00 – 09.30	<i>A. Tincani</i>	Contraception, prevention of infertility and hormonal therapy in SLE
09.30 – 10.00	<i>M. Östensen</i>	Drug therapy and toxicity in pregnancy and lactation
10.00 – 10.30	<i>R. Fischer-Betz</i>	Outcome of pregnancy in patients with SLE

**10.30 – 11.00**      **Coffee break**

11.00 – 11.30	<i>L. Andreoli</i>	Hughes syndrome, pregnancy and puerperium
11.30 – 12.00	<i>F. Strigini</i>	Pregnancy and rheumatic diseases: the obstetrician point of view

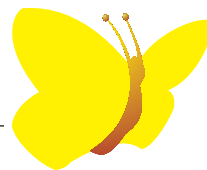
**12.00 – 13.00**      **Case Study Workshop**

*Moderator: R. Fischer-Betz*

*Discussant: R. Vagelli*

Management of contraception and pregnancy in clinical practice

**Afternoon: FREE**



**Pisa, Italy, May 21<sup>st</sup> - 26<sup>th</sup>, 2017**

---

**Thursday, May 25<sup>th</sup>**

***Morning***

*SLE, overlapping syndromes and classification criteria*

*Moderators: M. Aringer, P.L. Meroni*

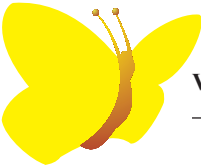
09.00 – 09.30	<i>M. Mosca</i>	Early SLE and undifferentiated connective tissue diseases
09.30 – 10.00	<i>C. Tani</i>	SLE, rheumatoid arthritis and overlap syndromes
10.00 – 10.30	<i>C. Baldini</i>	Pulmonary involvement and pulmonary hypertension in SLE and related conditions
<b>10.30 – 11.00</b>	<b><i>Coffee break</i></b>	
11.00 – 11.30	<i>M. Aringer</i>	SLE classification criteria: something new?
11.30 – 12.00	<i>P.L. Meroni</i>	Comorbidities and SLE
12.00 – 12.30	<i>T.W.J. Huizinga</i>	Pathogenesis of CNS involvement in SLE

***Afternoon***

*CNS involvement*

*Moderators: D.T. Boumpas, T.W.J. Huizinga*

15.00 – 15.30	<i>M. Govoni</i>	The picture of neuropsychiatric lupus
15.30 – 16.00	<i>D.T. Boumpas</i>	Treatment of NPSLE
<b>16.00 – 16.15</b>	<b><i>Coffee break</i></b>	
16.15 – 18.00	<b>Discussion of difficult clinical cases</b>	



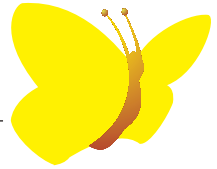
*Friday, May 26<sup>th</sup>*

***Morning***

*Clinical trials and registries*

*Moderators: R. Cervera, A.G. Tzioufas*

09.00 – 09.30	<i>I.N. Bruce</i>	Activity and damage assessment in trials and in clinical practice
09.30 – 10.00	<i>R. Cervera</i>	Registries and SLE
10.00 – 10.30	<i>A.G. Tzioufas</i>	SLE and Sjögren's syndrome
10.30 – 10.45	Course conclusions	
10.45 – 11.30	Completion of CME tests and departure of participants	



**Pisa, Italy, May 21<sup>st</sup> - 26<sup>th</sup>, 2017**

---

## **General Information**

### **Venue:**

Grand Hotel Duomo  
via Santa Maria 94, I-56126 Pisa, Italy

### **Course Chairpersons:**

Stefano Bombardieri  
Marta Mosca

### **Scientific Secretariat:**

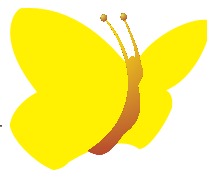
Chiara Tani  
c/o Clinical Experimental Rheumatology, Via Santa Maria 31, I-56126 Pisa, Italy.  
Phone (+39) 050 40124 - Fax (+39) 050 502299  
E-mail: [meetings@clinexprheumatol.org](mailto:meetings@clinexprheumatol.org)

### **Organizing Secretariat:**

Luisa Marconcini, Elisa Baldacci  
Clinical and Experimental Rheumatology, Via Santa Maria 31, I-56126 Pisa, Italy.  
Phone: (+39) 050 40124; Fax: (+39) 050-502299  
e-mail: [meetings@clinexprheumatol.org](mailto:meetings@clinexprheumatol.org)

**Pisa, Italy, May 21<sup>st</sup> - 26<sup>th</sup>, 2017**

---



## **General Information**

### **Registration and accommodation fees**

In order to attend the Course, participants are requested to complete the Registration Form and return it, with the payment to the Organizing Secretariat.

Fees per person, including full board (3 stars facilities) and all educational materials, are: € 1,100.00 (double room); € 1,250.00 (single room).

All prices are VAT included, and cover the duration of the course (5 nights).

Personal extras are not included.

### **Scholarships**

Scholarships to attend the Course, covering registration, accommodation and full board, have been offered by ***EULAR***, the ***Italian Society of Rheumatology (SIR)*** and ***"Gruppo LES Italiano" (Italian Lupus Patients Association)***. Preference has been given to European and Italian young rheumatologists (age below 40) or rheumatology trainees, coming from countries with relevant educational and financial needs. No more than one scholarship per centre has been awarded.

### **Certificate of Attendance**

A certificate of attendance to the Course will be given by the Secretariat.

*The “VIII EULAR Scientifically Endorsed Course on Systemic Lupus Erythematosus” was made possible thanks to the generous unrestricted support of:*

**eular**

- *European League Against Rheumatism (EULAR)*



- *Società Italiana di Reumatologia (S.I.R.)*



- *Italian Lupus Patients Association “Gruppo Italiano LES”*

*and*



**Bristol-Myers Squibb** - *Bristol Myers Squibb srl, Italy*



- *GlaxoSmithKline SpA, Italy*

*is a partial commercial sponsor of the present event; this event is subject to AIFA submission pursuant to and in accordance with article 124 of Legislative Decree 219/06.*



- *Roche SpA, Italy*



***Course Chairpersons***

Stefano Bombardieri, Marta Mosca

***Scientific Secretariat***

Chiara Tani

*c/o Clinical and Experimental Rheumatology*

Via Santa Maria 31, I-56126 Pisa, Italy. Phone: (+39) 050 40124; Fax: (+39) 050 502299

E-mail: [meetings@clinexprheumatol.org](mailto:meetings@clinexprheumatol.org)

***Organizing Secretariat***

Luisa Marconcini, Elisa Baldacci

*Clinical and Experimental Rheumatology*

Via Santa Maria 31, I-56126 Pisa, Italy. Phone: (+39) 050 40124; Fax: (+39) 050 502299

E-mail: [meetings@clinexprheumatol.org](mailto:meetings@clinexprheumatol.org)

website: <http://ecm.clinexprheumatol.org>