

# VII EULAR Scientifically Endorsed Course on Systemic Lupus Erythematosus

Pisa, Italy  
May 3<sup>rd</sup> - 8<sup>th</sup>, 2015



*Course Chairmen*  
Stefano Bombardieri, Marta Mosca



Scientific Secretariat:  
Chiara Tani

Organizing Secretariat:  
Luisa Marconcini, Elisa Baldacci

c/o Clinical and Experimental Rheumatology  
Via Santa Maria 31, I-56126 Pisa, Italy.  
Tel.: +39-050-40124; Fax: +39-050-502299  
e-mail: [meetings@clinexprheumatol.org](mailto:meetings@clinexprheumatol.org)

eular



Provider ECM n. 1709  
Clinical and Experimental Rheumatology  
Via Santa Maria 31 – 56126 Pisa, Italy  
Tel.: +39 050 40124  
Fax: +39 050 502299  
<http://ecm.clinexprheumatol.org>  
[meetings@clinexprheumatol.org](mailto:meetings@clinexprheumatol.org)



The VII EULAR Scientifically Endorsed Course on Systemic Lupus Erythematosus is accredited by the Italian Ministry of Health, and has been granted **26.5** E.C.M. credits.

These credits may be claimed by medical doctors of the following specialties: immunology and allergology, internal medicine, rheumatology.



The ‘VII EULAR Scientifically Endorsed Course on Systemic Lupus Erythematosus’ was granted **24** European CME credits (ECMEC) by the European Accreditation Council for Continuing Medical Education (EACCME).

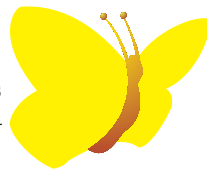
The ‘VII EULAR Scientifically Endorsed Course on Systemic Lupus Erythematosus’ is accredited by the European Accreditation Council for Continuing Medical Education (EACCME) to provide the following CME activity for medical specialists.

The EACCME is an institution of the European Union of Medical Specialists (UEMS), [www.uems.net](http://www.uems.net).

The ‘VII EULAR Scientifically Endorsed Course on Systemic Lupus Erythematosus’ is designated for up to 24 hours of European external CME credits. Each medical specialist should claim only those hours of credit that he/she actually spent in the educational activity.

Through an agreement between the European Union of Medical Specialists and the American Medical Association, physicians may convert EACCME credits to an equivalent number of AMA PRA category 1 Credits™. Information on the process to convert EACCME credit to AMA credit can be found at [www.ama-assn.org/go/internationalcme](http://www.ama-assn.org/go/internationalcme).

Live educational activities, occurring outside of Canada, recognized by the UEMS-EACCME for ECMEC credits are deemed to be Accredited Group Learning Activities (Section 1) as defined by the Maintenance of Certification Program of The Royal College of Physicians and Surgeons of Canada.



**Pisa, Italy, May 3<sup>rd</sup> - 8<sup>th</sup>, 2015**

*Organized in collaboration with EULAR  
Standing Committee on Education and Training*

## Faculty

### *Course Chairmen:*

Stefano Bombardieri (*Italy*)

Marta Mosca (*Italy*)

L. Andreoli (*Italy*)

M. Aringer (*Germany*)

E. Bartoloni Bucci (*Italy*)

G. Bertsias (*Greece*)

D.T. Boumpas (*Greece*)

I. Bruce (*UK*)

L. Carli (*Italy*)

R. Cervera (*Spain*)

N. Costedoat-Chalumeau (*France*)

A. Delle Sedie (*Italy*)

A. Doria (*Italy*)

R. Fischer Betz (*Germany*)

M. Govoni (*Italy*)

F. Houssiau (*Belgium*)

M. Jolly (*USA*)

A. Kuhn (*Germany*)

K. Lerstrom (*Denmark*)

M. Mazzantini (*Italy*)

P.L. Meroni (*Italy*)

P. Migliorini (*Italy*)

G. Moroni (*Italy*)

M. Östensen (*Norway*)

S. Paolino (*Italy*)

A. Rossi (*Italy*)

G. Ruiz-Irastorza (*Spain*)

M. Schneider (*Germany*)

Y. Shoenfeld (*Israel*)

F. Strigini (*Italy*)

C. Tani (*Italy*)

M. Tektonidou (*Greece*)

A. Tincani (*Italy*)

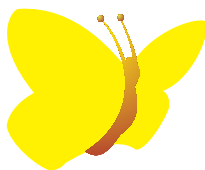
C. Vasconcelos (*Portugal*)

S. Vagnani (*Italy*)

P. G. Vlachoyiannopoulos (*Greece*)

R. Voll (*Germany*)

J. Yazdany (*USA*)



## VII EULAR Scientifically Endorsed Course on Systemic Lupus Erythematosus

---

### *Sunday, May 3<sup>rd</sup>*

15.00 – 17.00

Arrival and registration of participants

#### *Course presentation*

17.00 – 17.30

*M. Mosca*

Course presentation

17.30 – 18.00

*S. Bombardieri*

The clinical spectrum of systemic autoimmunity: from UCTD to complex syndromes

18.00 – 18.30

*K. Lerstrom*

A difficult journey: living with lupus

### *Monday, May 4<sup>th</sup>*

#### *Morning*

##### *Pathogenesis of SLE*

*Moderators: P. Migliorini, Y. Shoenfeld*

09.00 – 09.30

*Y. Shoenfeld*

Environment and autoimmunity

09.30 – 10.00

*A. Doria*

Pathogenesis and therapeutic targets

10.00 – 10.30

*R. Voll*

B cells in SLE

10.30 – 10.45

Discussion

#### *10.45-11.15*

#### *Coffee Break*

11.15 – 11.45

*P. Migliorini*

Pathogenetic antibodies in SLE

11.45 – 12.15

*S. Paolino*

Hormone D and SLE

12.15 – 13.00

Discussion of 2 difficult clinical cases

#### *Afternoon*

##### *Kidney involvement*

*Moderators: D. Boumpas, F. Houssiau*

14.15 – 14.45

*F. Houssiau*

Therapeutic algorithms in lupus nephritis

14.45 – 15.15

*M. Tektonidou*

Epidemiology and outcomes in lupus nephritis

15.15 – 15.45

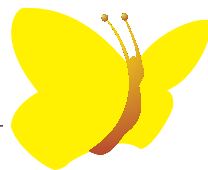
*G. Moroni*

Clinical features and biomarkers in lupus nephritis

15.45 – 16.15

*D. Boumpas*

EULAR Recommendations for the management of lupus nephritis



*Tuesday, May 5<sup>th</sup>*

**Morning**

*Highlights of SLE treatment*

*Moderators: N. Costedoat-Chalumeau, M. Tektonidou*

09.00 – 09.30	<i>G. Ruiz-Irastorza</i>	Corticosteroid: principles of therapy and monitoring
09.30 – 10.00	<i>N. Costedoat-Chalumeau</i>	Antimalarials and adherence to therapy in SLE
10.00 – 10.30	<i>P. Vlachoyiannopoulos</i>	”Traditional drugs” in SLE. Focus on immunosuppressive drugs
10.30 – 11.00	<i>A. Delle Sedie/C. Tani</i>	Joint involvement in SLE and RA: differences and similarities in clinical picture and management

**11.00 – 11.30      *Coffee break***

11.30 – 12.00	<i>M. Mosca</i>	New therapies in SLE
---------------	-----------------	----------------------

**12.00 – 13.00      *Case Study Workshop***

*Moderator: G. Ruiz-Irastorza*

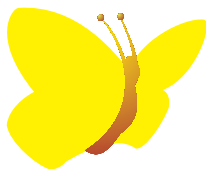
*Discussant: L. Carli*

Use of biological drugs in a financially restricted environment: can we reach consensus?

**Afternoon**

*Skin involvement*

14.00 – 15.00	<i>A. Kuhn</i>	Treatment of cutaneous manifestations in SLE
15.00 – 16.00	<b><i>Case Study Workshop</i></b> <i>Moderator: A. Kuhn</i> <i>Discussant: C. Tani</i>	Management of cutaneous manifestations in clinical practice



*Wednesday, May 6<sup>th</sup>*

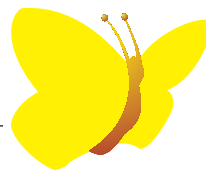
***Morning***

*Pregnancy and SLE*

*Moderators: A. Tincani, M. Östensen*

09.00 – 09.30	<i>A. Tincani</i>	Contraception, prevention of infertility and hormonal therapies in SLE
09.30 – 10.00	<i>M. Östensen</i>	Drug therapy and toxicity in pregnancy and lactation
10.00 – 10.45	<i>R. Fischer-Betz</i>	Outcome of pregnancy in patients with SLE
10.45 – 11.00		Discussion
<b>11.00 – 11.30</b>	<b><i>Coffee break</i></b>	
11.30 – 12.00	<i>F. Strigini</i>	Pregnancy and rheumatic diseases: the obstetrician point of view
12.00 – 13.00	<b>Case Study Workshop</b> <i>Moderator: R. Fischer-Betz</i> <i>Discussant: L. Andreoli</i>	Management of pregnancies in clinical practice

**Afternoon: FREE**



**Thursday, May 7<sup>th</sup>**

**Morning**

*Assessment of SLE in clinical trials and routine clinical practice*

*Moderators: M. Schneider, J. Yazdany*

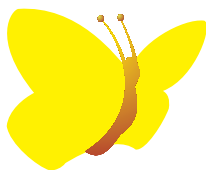
09.00 – 09.30	<i>M. Aringer</i>	The classification criteria for SLE
09.30 – 10.00	<i>M. Schneider</i>	Assessment of disease activity, damage, outcomes and pitfalls in clinical trials in SLE
10.00 – 10.30	<i>M. Jolly</i>	Patient reported outcomes and communication gaps in SLE
<b>10.30 – 11.00</b>	<b><i>Coffee break</i></b>	
11.00 – 11.30	<i>J. Yazdany</i>	Quality of care in SLE
11.30 – 12.00	<i>R. Cervera</i>	Registries and SLE
12.00 – 13.00	<b>Case Study Workshop</b>	
	<i>Moderator: M. Jolly</i>	
	<i>Discussant: E. Bartoloni Bocci</i>	Assessment of patients in routine clinical practice

**Afternoon**

*CNS involvement*

*Moderators: R. Cervera, M. Aringer*

14.00 – 14.30	<i>P.L. Meroni</i>	Pathogenesis of CNS involvement in SLE
14.30 – 15.00	<i>M. Govoni</i>	The picture of neuropsychiatric lupus
15.00 – 15.30	<i>G. Bertias</i>	Treatment of NPSLE
15.30 – 16.30	Discussion of 3 difficult clinical cases	



*Friday, May 8<sup>th</sup>*

***Morning***

*Can we further improve SLE prognosis?*

*Moderators: M. Mosca, S. Bombardieri*

09.00 – 09.30 *C. Vasconcelos*

09.30 – 10.00 *I. Bruce*

10.00 – 10.30 *M. Mazzantini*

Causes of death and SLE

Atherosclerosis and SLE

SLE and bone health

***10.30 - 11.00 Coffee break***

11.00 – 11.30 *M. Mosca*

11.30 – 12.00 *A. Rossi/S. Vagnani*

Treat-to-target in SLE: yes or no?

Diet and SLE

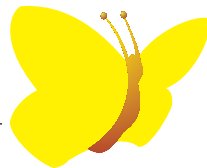
*S. Bombardieri, M. Mosca*

Course conclusions

CME credits and departure of the participants

**Pisa, Italy, May 3<sup>rd</sup> - 8<sup>th</sup>, 2015**

---



## **General Information**

### **Venue:**

Grand Hotel Duomo  
via Santa Maria 94, I-56126 Pisa, Italy

### **Course Chairmen:**

Stefano Bombardieri  
Marta Mosca

### **Scientific Secretariat:**

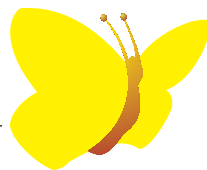
Chiara Tani  
c/o Clinical Experimental Rheumatology, Via Santa Maria 31, I-56126 Pisa, Italy.  
Phone (+39) 050 40124 - Fax (+39) 050 502299  
E-mail: [meetings@clinexprheumatol.org](mailto:meetings@clinexprheumatol.org)

### **Organizing Secretariat:**

Luisa Marconcini, Elisa Baldacci  
Clinical and Experimental Rheumatology, Via Santa Maria 31, I-56126 Pisa, Italy.  
Phone: (+39) 050 40124; Fax: (+39) 050-502299  
e-mail: [meetings@clinexprheumatol.org](mailto:meetings@clinexprheumatol.org)

**Pisa, Italy, May 3<sup>rd</sup> - 8<sup>th</sup>, 2015**

---



## **General Information**

### **Registration and accommodation fees**

In order to attend the Course, participants are requested to complete the Registration Form and return it, with the payment to the Organizing Secretariat.

Fees per person, including full board (3 stars facilities) and all educational materials, are: € 1.100,00 (double room); € 1.250,00 (single room).

All prices are VAT included, and cover the duration of the course (5 nights).

Personal extras are not included.

### **EULAR Scholarships**

EULAR will offer up to ten scholarships to attend the Course, covering registration, accommodation and full board. Preference will be given to European young rheumatologists (age below 40) or rheumatology trainees, coming from countries with relevant educational and financial needs. No more than one scholarship per center will be awarded.

### **Certificate of Attendance**

A certificate of attendance to the Course will be given by the Secretariat.

*The “VII EULAR Scientifically Endorsed Course on Systemic Lupus Erythematosus” was made possible thanks to the generous unrestricted support of:*

- European League Against Rheumatism (EULAR)*
- Società Italiana di Reumatologia (S.I.R.)*
- Italian Lupus Patients Association “Gruppo Italiano LES”*

*and*

- GlaxoSmithKline SpA, Italy*



***Course Chairmen***

Stefano Bombardieri, Marta Mosca

***Scientific Secretariat***

Chiara Tani

c/o Clinical and Experimental Rheumatology

Via Santa Maria 31, I-56126 Pisa, Italy. Phone: (+39) 050 40124; Fax: (+39) 050 502299

E-mail: [meetings@clinexprheumatol.org](mailto:meetings@clinexprheumatol.org)

***Organizing Secretariat***

Luisa Marconcini, Elisa Baldacci

Clinical and Experimental Rheumatology

Via Santa Maria 31, I-56126 Pisa, Italy. Phone: (+39) 050 40124; Fax: (+39) 050 502299

E-mail: [meetings@clinexprheumatol.org](mailto:meetings@clinexprheumatol.org)

website: <http://ecm.clinexprheumatol.org>