

# VI EULAR Scientifically Endorsed Course on Systemic Lupus Erythematosus

Pisa, Italy

September 1<sup>st</sup> - 6<sup>th</sup>, 2013



*Course Chairman*  
Stefano Bombardieri



Scientific Secretariat:  
Marta Mosca

Organizing Secretariat:  
Luisa Marconcini, Elisa Baldacci

c/o Clinical and Experimental Rheumatology  
Via Santa Maria 31, I-56126 Pisa, Italy.  
Tel.: +39-050-40124; Fax: +39-050-502299  
e-mail: [meetings@clinexprheumatol.org](mailto:meetings@clinexprheumatol.org)

eular



Provider ECM n. 1709  
Clinical and Experimental Rheumatology  
Via Santa Maria 31 – 56126 Pisa, Italy  
Tel.: +39 050 40124  
Fax: +39 050 502299  
<http://ecm.clinexprheumatol.org>  
[meetings@clinexprheumatol.org](mailto:meetings@clinexprheumatol.org)



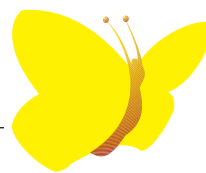
The VI EULAR Scientifically Endorsed Course on Systemic Lupus Erythematosus is accredited by the Italian Ministry of Health, and has been granted **26.5** E.C.M. credits. These credits may be claimed by medical doctors of the following specialties: immunology and allergology, dermatology and venereology, internal medicine, nephrology, neurology, pediatrics, rheumatology, gynaecology and obstetrics, pharmacology and clinical toxicology.



The 'VI EULAR Scientifically Endorsed Course on Systemic Lupus Erythematosus' was granted **24** European CME credits (ECMEC) by the European Accreditation Council for Continuing Medical Education (EACCME).

The 'VI EULAR Scientifically Endorsed Course on Systemic Lupus Erythematosus' is accredited by the European Accreditation Council for Continuing Medical Education (EACCME) to provide the following CME activity for medical specialists. The EACCME is an institution of the European Union of Medical Specialists (UEMS), [www.uems.net](http://www.uems.net). The 'VI EULAR Scientifically Endorsed Course on Systemic Lupus Erythematosus' is designated for up to 24 hours of European external CME credits. Each medical specialist should claim only those hours of credit that he/she actually spent in the educational activity.

Through an agreement between the European Union of Medical Specialists and the American Medical Association, physicians may convert EACCME credits to an equivalent number of AMA PRA category 1 Credits<sup>™</sup>. Information on the process to convert EACCME credit to AMA credit can be found at [www.ama-assn.org/go/internationalcme](http://www.ama-assn.org/go/internationalcme). Live educational activities, occurring outside of Canada, recognized by the UEMS-EACCME for ECMEC credits are deemed to be Accredited Group Learning Activities (Section 1) as defined by the Maintenance of Certification Program of The Royal College of Physicians and Surgeons of Canada.



**Pisa, Italy, September 1<sup>st</sup> - 6<sup>th</sup>, 2013**

*Organized in collaboration with EULAR  
Standing Committee on Education and Training*

## Faculty

*Course Chairman:*

Stefano Bombardieri (*Italy*)

M. Aringer (*Germany*)

J.H. Berden (*The Netherlands*)

G. Bertsias (*Greece*)

J.W.J. Bijlsma (*The Netherlands*)

D.T. Boumpas (*Greece*)

A. Brucato (*Italy*)

I. Bruce (*UK*)

R. Cervera (*Spain*)

N. Costedoat-Chalumeau (*France*)

M. Cutolo (*Italy*)

A. Doria (*Italy*)

R. Gerli (*Italy*)

M. Jolly (*USA*)

F. Houssiau (*Belgium*)

A. Kuhn (*Germany*)

M.F. Moraes-Fontes (*Portugal*)

M. Galeazzi (*Italy*)

M. Govoni (*Italy*)

M.A. Khamashta (*UK*)

P.L. Meroni (*Italy*)

P. Migliorini (*Italy*)

G. Moroni (*Italy*)

M. Mosca (*Italy*)

M. Östensen (*Sweden*)

G. Ruiz-Irastorza (*Spain*)

M. Schneider (*Germany*)

Y. Shoenfeld (*Israel*)

F. Strigini (*Italy*)

C. Tani (*Italy*)

A. Tincani (*Italy*)

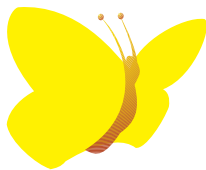
A.G. Tzioufas (*Greece*)

R.F. van Vollenhoven (*Sweden*)

C. Vasconcelos (*Portugal*)

R. Voll (*Germany*)

J. Yazdany (*USA*)



### *Sunday, September 1<sup>st</sup>*

16.00 – 17.30

Arrival and registration of participants

#### *Course presentation*

17.30 – 18.30

*S. Bombardieri*

Course presentation

18.30 – 19.00

*M.F. Fontes*

Is it possible to screen SLE patients for neuropsychiatric involvement?

### *Monday, September 2<sup>nd</sup>*

#### *Morning*

##### *Pathogenesis of SLE*

09.00 – 09.30

*M. Galeazzi*

The genetics of SLE

09.30 – 10.00

*M. Cutolo*

Hormones and vitamin D in the pathogenesis of SLE

10.00 – 10.30

*P. Migliorini*

Pathogenetic antibodies in SLE humoral immunity and SLE

10.30 – 11.00

*R. Voll*

Cellular immunity in SLE

**11.00-11.30**

***Coffee Break***

11.30 – 12.00

*P. Meroni*

Pathogenesis of CNS involvement in SLE

12.00 – 12.30

*J.W.J. Bijlsma*

Corticosteroids: principles of therapy and monitoring

#### *Afternoon*

##### *Highlights on SLE treatment*

14.30 – 15.00

*G. Ruiz Irastorza*

“Traditional drugs” in SLE. Focus on immunosuppressive drugs

15.00 – 15.30

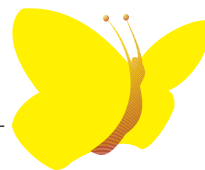
*M. Mosca*

New treatments in SLE in clinical practice

15.30 – 16.30

*Clinical exercise*

A core set chart to collect clinical data in routine clinical practice



**Tuesday, September 3<sup>rd</sup>**

***Morning***

*CNS and skin involvement*

09.00 – 09.30	<i>M. Govoni</i>	The clinical picture and the assessment of neuropsychiatric lupus
09.30 – 10.00	<i>G. Bertsias</i>	EULAR recommendations for neuropsychiatric lupus: pitfalls and challenges

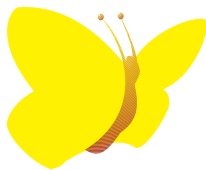
***10.00 – 10.30 Coffee break***

10.30 – 11.00	<i>A. Kuhn</i>	Overview and treatment of cutaneous manifestations in lupus erythematosus
11.00 – 13.00		<i>Questions and answers on clinical cases</i>

***Afternoon***

*Kidney involvement*

14.30 – 15.00	<i>G. Moroni</i>	Clinical and laboratory features of lupus nephritis and prognostic factors
15.00 – 15.30	<i>F. Houssiau</i>	Treatment of lupus nephritis: old and new approaches
15.30 – 16.00	<i>D.T. Boumpas</i>	EULAR Recommendations for the management of lupus nephritis
16.00 – 16.30	<i>J. Berden</i>	Endstage renal disease: prevalence and management
16.30 – 17.30		<i>Questions and answers on clinical cases</i>



*Wednesday, September 4<sup>th</sup>*

**Morning**

*Family planning, assisted fertility, pregnancy, delivery, menopause and women health in SLE*

09.00 – 09.30	<i>A. Tincani</i>	Contraception, prevention of infertility and hormonal therapies in SLE
09.30 – 10.00	<i>M. Östensen</i>	Drug therapy and toxicity in pregnancy and lactation
10.00 – 10.30	<i>F. Strigini</i>	Outcome of pregnancy in patients with SLE

**10.30 – 11.00      *Coffee break***

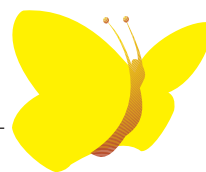
11.00 – 11.30	<i>M.A. Khamashta</i>	Therapeutic algorithms for active SLE in pregnancy
11.30 – 12.00	<i>A. Brucato</i>	Neonatal lupus and outcome of babies of SLE patients

12.00 – 13.00		<i>Questions and answers on clinical cases</i>
---------------	--	--

**Afternoon: FREE**

**Pisa, Italy, September 1<sup>st</sup> - 6<sup>th</sup>, 2013**

---



**Thursday, September 5<sup>th</sup>**

***Morning***

*Assessment of SLE in clinical trials and routine clinical practice*

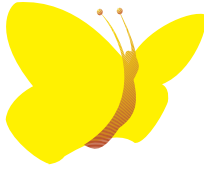
09.00 – 09.30	<i>M. Aringer</i>	The SLICC classification and diagnostic criteria for SLE
09.30 – 10.00	<i>I. Bruce</i>	Assessment of disease activity and damage in clinical trials in SLE
10.00 – 10.30	<i>M. Jolly</i>	Patient reported outcomes in SLE

***10.30 – 11.00 Coffee break***

11.00 – 11.30	<i>R.F. van Vollenhoven</i>	Treat to target in SLE
11.30 – 12.00	<i>M. Schneider</i>	Pitfalls of trials in SLE
12.00 – 12.30	<i>N. Costedoat-Chalumeau</i>	Hydroxychloroquine and SLE: what's new

***Afternoon***

14.30 – 15.00	<i>J. Yazdany</i>	Quality of care in SLE
15.00 – 15.30	<i>R. Cervera</i>	SLE and anti-phospholipid syndrome
15.30 – 16.00	<i>A.G. Tzioufas</i>	SLE and Sjögren's syndrome: an overlap syndrome with a specific clinical profile?
16.00 - 16.30	<i>C. Tani</i>	Rhupus syndrome
16.30 – 17.30		<i>Questions and answers on clinical cases</i>



*Friday, September 6<sup>th</sup>*

***Morning***

*Can we further improve SLE prognosis?*

09.00 – 09.30	<i>C. Vasconcelos</i>	Causes of death and SLE
09.30 – 10.00	<i>R. Gerli</i>	Atherosclerosis and SLE
10.00 – 10.30	<i>Y. Shoenfeld</i>	Hyperferritinemic syndrome
10.30 – 11.00	<i>A. Doria</i>	An overview of the pathogenesis of SLE: specific organ involvement and potential therapeutic targets

***11.00-11.30      Coffee break***

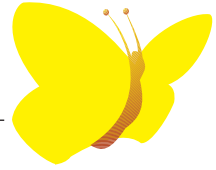
*Final lecture*

11.30 – 12.00	<i>S. Bombardieri</i>	Can we further improve SLE prognosis?
12.00 – 12.30		Course conclusions CME credits and departure of participants



**Pisa, Italy, September 1<sup>st</sup> - 6<sup>th</sup>, 2013**

---



## **General Information**

### **Venue:**

Grand Hotel Duomo  
via Santa Maria 94, I-56126 Pisa, Italy

### **Scientific Secretariat:**

Marta Mosca

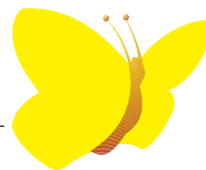
c/o Clinical Experimental Rheumatology, Via Santa Maria 31, I-56126 Pisa, Italy.  
Phone (+39) 050 40124 - Fax (+39) 050 502299  
E-mail: [meetings@clinexprheumatol.org](mailto:meetings@clinexprheumatol.org)

### **Organizing Secretariat:**

Luisa Marconcini, Elisa Baldacci  
Clinical and Experimental Rheumatology, Via Santa Maria 31, I-56126 Pisa, Italy.  
Phone: (+39) 050 40124; Fax: (+39) 050-502299  
e-mail: [meetings@clinexprheumatol.org](mailto:meetings@clinexprheumatol.org)

**Pisa, Italy, September 1<sup>st</sup> - 6<sup>th</sup>, 2013**

---



## **General Information**

### **Registration and accommodation fees**

In order to attend the Course, participants are requested to complete the Registration Form and return it, with the payment to the Organizing Secretariat. Fees per person, including full board (3 stars facilities) and all educational materials, are: € 1.100,00 (double room); € 1.250,00 (single room).

All prices are VAT included, and cover the duration of the course (5 nights).

Personal extras are not included.

### **EULAR Scholarships**

EULAR will offer up to ten scholarships to attend the Course, covering registration, accommodation and full board. Preference will be given to European young rheumatologists (age below 40) or rheumatology trainees, coming from countries with relevant educational and financial needs. No more than one scholarship per center will be awarded. Applications (short CV, letter of recommendation and reasons to request support) should be sent to the EULAR Secretariat no later than July 15, 2013, applying on-line: [www.eular.org](http://www.eular.org).

### **Certificate of Attendance**

A certificate of attendance to the Course will be given by the Secretariat.

*The “VI EULAR Scientifically Endorsed Course on Systemic Lupus Erythematosus”  
was made possible thanks to the generous unrestricted support of:*

- European League Against Rheumatism (EULAR)*
- Società Italiana di Reumatologia (S.I.R.)*
- Italian Lupus Patients Association “Gruppo Italiano LES”*



***Course Chairman***

Stefano Bombardieri

***Scientific Secretariat***

Marta Mosca,

c/o Clinical and Experimental Rheumatology

Via Santa Maria 31, I-56126 Pisa, Italy. Phone: (+39) 050 40124; Fax: (+39) 050 502299

E-mail: [meetings@clinexprheumatol.org](mailto:meetings@clinexprheumatol.org)

***Organizing Secretariat***

Luisa Marconcini, Elisa Baldacci

Clinical and Experimental Rheumatology

Via Santa Maria 31, I-56126 Pisa, Italy. Phone: (+39) 050 40124; Fax: (+39) 050 502299

E-mail: [meetings@clinexprheumatol.org](mailto:meetings@clinexprheumatol.org)

website: <http://ecm.clinexprheumatol.org>