

## Program

### Sunday, September 9, 2007

J.R. Kalden Pathogenesis of SLE  
J.S. Smolen The clinical spectrum of SLE: SLE, overlap syndromes, MCTD

### Monday, September 10, 2007

#### Therapy of SLE: traditional drugs and new prospective

R. Danesi The role of pharmacogenomics in the treatment of SLE  
M. Cutolo Corticosteroids and SLE  
M. Aringer Biological agents in SLE  
M. Mosca "Traditional drugs" in SLE. Focus on immunosuppressive drugs  
P.L. Mcroni Statins, anticoagulant, antithrombotic drugs  
A. Doria Can we further improve SLE prognosis?  
A.G. Tzioufas Drug therapy and prevention of infertility in SLE  
M. Mazzanti Drug therapy and osteoporosis in SLE  
M. Ostensen Drug therapy and toxicity in pregnancy and lactation

### Tuesday, September 11, 2007

#### CNS involvement

Y. Shoenfeld CNS lupus, autoantibodies, smell and pathogenesis  
G. Riemekasten Pathogenesis of CNS involvement in SLE  
J.C. Piette Neurological manifestations of CNS involvement in SLE  
G. Castellino Optimizing the clinical monitoring of CNS involvement in SLE  
T. Huizinga Therapeutic algorithms in neurological involvement in SLE

#### The challenging aspects of lupus I

K.M. Montecucco Fever and SLE  
K. Manger Haematological manifestations of SLE  
R. Priori Gastrointestinal and liver involvement in SLE  
PRACTICAL POINT Which role for computerized data bases in the assessment of patients?

### Wednesday, September 12, 2007

#### Measures to assess and monitoring a patient with SLE and response to therapy: creation of a data base for SLE patients

H. Nossent ACR classificative criteria: a critical review  
S. Bombardieri The core set variables to assess patients in routine clinical practice  
M. Ward Disease activity and damage indices in SLE, an overview  
D. D'Cruz Fatigue and quality of life in SLE  
C. Gordon EULAR Recommendations for clinical trials in SLE  
D. Boumpas EULAR Recommendations for the management of SLE

### Thursday, September 13, 2007

#### Kidney involvement

P. Migliorini Pathogenetic autoantibodies in lupus nephritis  
G. Moroni Histological features of lupus nephritis  
R.A. Sinico Clinical features and prognostic factors in LN  
J. Berden Dialysis and kidney transplantation in SLE  
D. Boumpas Therapeutic algorithms in lupus nephritis

#### Skin involvement

F. Nyberg Overview of cutaneous manifestations in Lupus erythematosus  
R. Roldan Diagnosis and differential diagnosis of cutaneous involvement in Lupus Erythematosus  
A. Kuhn Treatment of cutaneous manifestations of Lupus Erythematosus

### Friday, September 14, 2007

#### The challenging aspects of lupus II

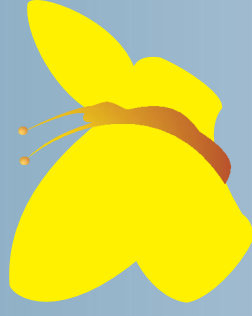
M. Schneider Heart and lung in SLE  
G.F. Ferraccoli Joint involvement in SLE  
R. Geri Atherosclerosis in SLE  
P.C. Sarzi-Puttini Late onset SLE  
G. Espinosa Anti-phospholipid syndrome

#### Pregnancy and SLE

A. Tinicani Outcome of pregnancy and outcome of babies in patients with SLE  
A. Brucato Neonatal lupus  
A. Martini Juvenile lupus

# III<sup>o</sup> EULAR Course on Systemic Lupus Erythematosus

S. Croce in Fossabanda, Pisa, Italy  
September 9-14, 2007



eular



**Scientific Secretariat:**  
Dr Maria Mosca

**Course Chairmen**  
**Organizing Secretariat:**  
Luisa Marconcini, Elisa Baldacci

**S. Bombardieri (Italy), J.R. Kalden (Germany), J.S. Smolen (Austria)**

c/o Clinical and Experimental Rheumatology  
Via Santa Maria 31, I-56126 Pisa, Italy.  
Tel.: +39-050-40124; fax: +39-050-502299  
e-mail: marconcini@clinexrheumatol.org



## Third EULAR Course on Systemic Lupus Erythematosus

Organized in collaboration with the EULAR Standing Committee on Education and Training

Pisa, Italy, September 9 – 14, 2007

The Course will consist of morning and afternoon sessions that will address the following topics:

- therapy of SLE, molecular basis of drug action and pharmacogenetics
- evaluation of SLE patients: disease activity, damage, quality of life
- renal involvement in SLE
- cutaneous involvement in SLE
- neurological involvement in SLE
- Particular aspects of the disease: gastrointestinal involvement, joint involvement, cardiopulmonary involvement, hematological manifestations, atherosclerosis, pregnancy, late onset SLE, juvenile SLE.

In addition each day will include a clinical exercise relating to the day's topics.

The course will be held at the cloister of S. Croce in Fossabanda, a beautiful complex built in 1300 and restored for the Jubilee of the year 2000 for use as a hotel. The cloister ([www.fossabanda.it](http://www.fossabanda.it)) is located in piazza Santa Croce 11, Pisa.

**CME credits:** Applications have been forwarded for European credits

### Faculty:

*Course Chairmen:* S. Bombardieri (Italy), J.R. Kalden (Germany), J.S. Smolen (Austria)  
M. Aringer (Austria), J. Berden (The Netherlands), D. Boumpas (Greece), A. Brucato (Italy), G. Castellino (Italy), M. Cutolo (Italy), R. Danesi (Italy), D. D' Cruz (UK), A. Doria (Italy), G. Espinosa (Spain), G.F. Ferraccioli (Italy), R. Gerli (Italy), C. Gordon (UK), T. Huizinga (The Netherlands), A. Kuhn (Germany), K. Manger (Germany), A. Martini (Italy), M. Mazzanti (Italy), P.L. Meroni (Italy), P. Migliorini (Italy), C.M. Montecucco (Italy), G. Moroni (Italy), M. Mosca (Italy), F. Nyberg (Sweden), H. Nossent (Norway), M. Ostensen (Switzerland), J.C. Piette (France), R. Priori (Italy), G. Riemekasten (Germany), R. Roldan (Italy), P.C. Sarzi-Puttini (Italy), M. Schneider (Germany), Y. Shoenfeld (Israel), R.A. Simico (Italy), A. Tincani (Italy), A.G. Tzioufas (Greece), M. Ward (USA).

### Application:

participants should forward their application by fax or e-mail to the Scientific Secretariat no later than June 30th, 2007. Applications should include a short CV (100-150 words) and a list of no more than 5 publications. Acceptance of the application will be notified by e-mail within July 31st, 2007.

### Fees:

as only very limited number of single rooms are available at the cloister, applicants will be mainly lodged in double rooms. Fees per person, including full board and all educational materials, are 1,100.00 euros (double rooms) and 1,250.00 euros (single room)

**Scientific Secretariat:**  
Dr Marta Mosca, c/o Clinical and Experimental Rheumatology, Via Santa Maria 31, I-56126 Pisa, Italy, Tel.: +39-050-40124; fax: +39-050-502299; e-mail: [marta.mosca@int.med.uniipi.it](mailto:marta.mosca@int.med.uniipi.it)

### Organizing Secretariat:

Luisa Marconcini, Elisa Baldacci,  
Clinical and Experimental Rheumatology, Via Santa Maria 31, I-56126 Pisa, Italy.  
Tel.: +39-050 40124; fax: +39-050-502299  
e-mail: [marconcini@clincxprheumatol.org](mailto:marconcini@clincxprheumatol.org)

### Transportation:

Low cost companies connect:

- Pisa International Airport (<http://www.pisa-airport.com>) with the following European cities: Amsterdam, Barcelona (Girona), Berlin (Schönefeld), Billund, Bournemouth, Bristol, Bruxelles (Charleroi), Doncaster, Dublin, East Midlands, Eindhoven, Frankfurt (Hahn), Friedrichshafen, Glasgow (Prestwick), Hamburg (Lubeck), Hannover, Karlsruhe-Baden, Köln-Bonn, Liverpool, London Gatwick, London Stansted, Madrid, Malta, Munich, Oslo, Oslo (Torp), Paris (Charles de Gaulle), Paris (Orly), Sevilla, Stuttgart, Tirana, Valencia.
- Florence Airport (90 Km from Pisa) (<http://www.acroporto.firenze.it>) with the following European cities: Amsterdam, Barcelona, Bruxelles, Budapest, Copenhagen, Frankfurt, Geneva, London Gatwick, Madrid, Munich, Paris (Charles de Gaulle), Prague, Timisoara, Tirana, Vienna. Trains from Florence to Pisa run approximately every hour. Train timetables are available at: <http://www.trenitalia.com>.



### Third EULAR Course on systemic Lupus Erythematosus

Organized in collaboration with EULAR Standing Committee for Education and Training

I wish to attend the Course:

Name: .....

Institution: .....

Passport Number: .....

Codice fiscale (only for Italian participants): .....

Preferred accommodation:  single room  double room

Address: .....

City and Country: .....

e-mail address: .....

Please send this coupon by fax (+39-050-502299) or e-mail to: [marconcini@clincxprheumatol.org](mailto:marconcini@clincxprheumatol.org)

